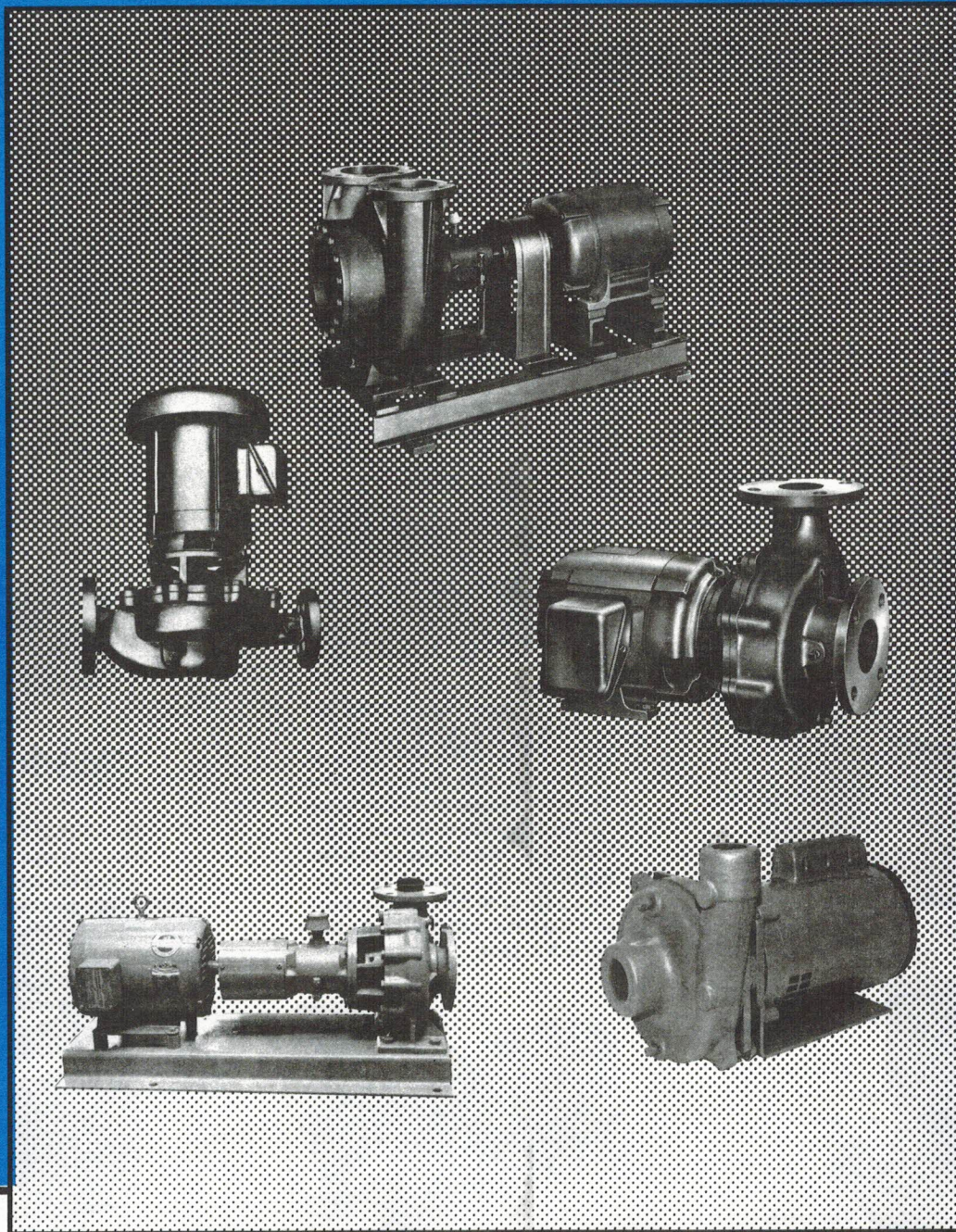


CENTRIFUGAL PUMPS

CLOSE COUPLED PUMPS
IN-LINE PUMPS
BASE MOUNTED PUMPS
CIRCULATOR PUMPS
DOUBLE VOLUTE PUMPS

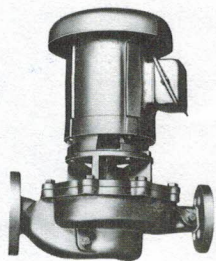


MARSHALL ENGINEERED PRODUCTS CO.

Here's a line of centrifugal pumps designed to handle a wide range of applications. Used where water or other general purpose liquids are to be circulated, such as in cooling towers, chilled or hot water circulation systems, drainage and many other institutional, commercial and industrial applications.

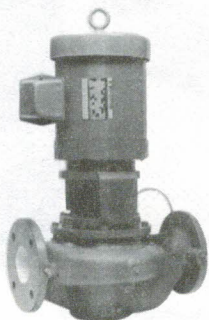
Close-Coupled & In-Line

Close-coupled and In-line pumps are used in supply system applications such as boiler feed, processing, drainage, washer service and booster service. These pumps are also used as circulators in evaporative condensers, cooling towers, hot water and chilled water systems.



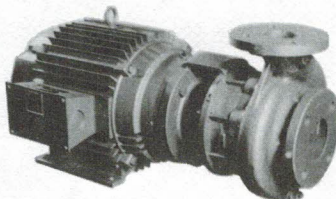
Model PM7

The MEPCO Type PM7 pump is of the volute type and is for horizontal or vertical position. Fifty-four models are available in the PM7 pump with ranges from 1/4 HP to 25 HP and capacities to 480 GPM, 90 PSI. Refer to Form No. 1470.



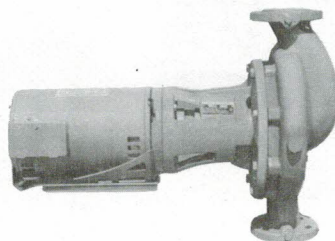
Model V

The MEPCO Type V is of the volute type and is for horizontal or vertical installations. Seventy-five models are available in the V pump with ranges from 1-1/2 HP to 60 HP and capacities to 1200 GPM, 140 PSI. Refer to Form No. 1606.



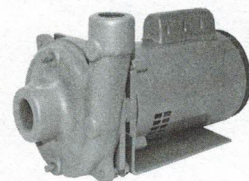
Model C

The MEPCO Type C is of the volute type for horizontal or vertical installation. Seventy-five models are available in the C pump with ranges from 3 HP to 50 HP and capacities to 1500 GPM, 140 PSI. Refer to Form No. 1604



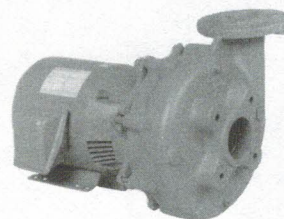
Model DC

The MEPCO Type DC pump is of the volute type and is for horizontal or vertical installation. Twenty-five models are available in the DC pump with ranges from 1/4 HP to 2 HP and capacities to 200 GPM, 20 PSI. Refer to Form No. 1608.



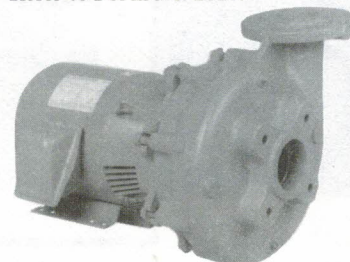
Model R5 & R6

The MEPCO Type R5 & R6 pumps are of the volute type for horizontal or vertical installation. Forty models are available in the R5, R6 pumps with ranges from 1/3 HP to 20 HP and capacities to 480 GPM, 75 PSI. Refer to Form Nos. 1602 and 1603.



Model R7

The MEPCO Type R7 pump is of the volute type for horizontal or vertical installation. Fifty-four (54) models are available in the R7 pump with ranges from 1 HP to 30 HP and capacities to 600 GPM, 110 PSI. Sizes over 2" are with flanged case. Refer to Form No. 1610.



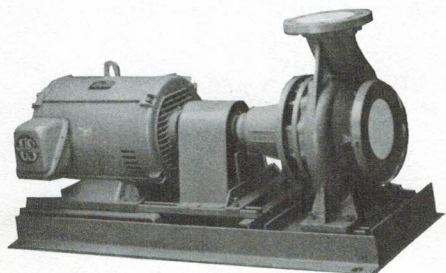
Model R9

The MEPCO Type R9 pump is of the volute type for horizontal or vertical installation. Forty-one (41) models are available in the R9 pump with ranges from 1 HP to 60 HP and capacities to 500 GPM, 170 PSI. Sizes over 2" are with flanged case. Refer to Form No. 1611.

e of Centrifugal Pumps

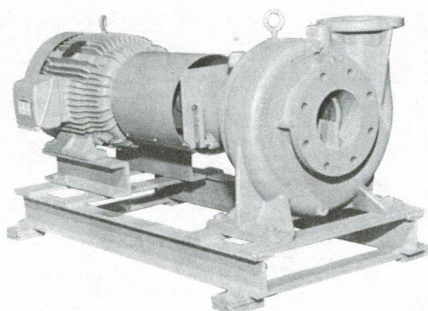
Base Mounted

Base Mounted pumps are most commonly applied for water circulation to be used for heating or air conditioning. The particular quietness of these pumps makes them most suitable for handling hot and chilled water for hydronic systems. They are also very successfully applied for condenser water, domestic hot water and water supply systems.



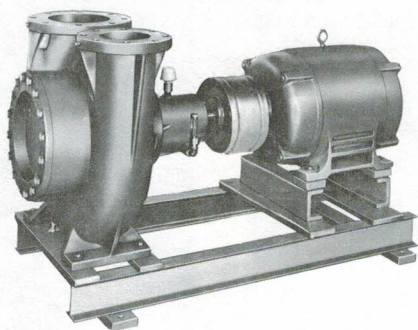
Model F

The MEPCO Type F pump is of the volute type and is for horizontal mounting. Fifty models are available in the F pump with ranges from 1 HP to 200 HP and capacities to 3000 GPM, 140 PSI. Refer to Form No. 1605.



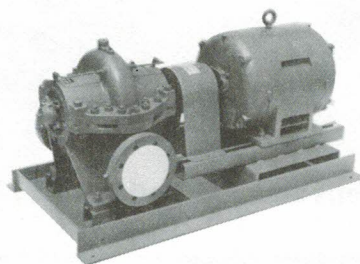
Model E

The MEPCO type E pump is of double volute type for horizontal mounting. Thirty-two models are available in the E pump with ranges from 7-1/2 HP to 150 HP and capacities to 2600 GPM, 100 PSI. Refer to Form No. 1451.



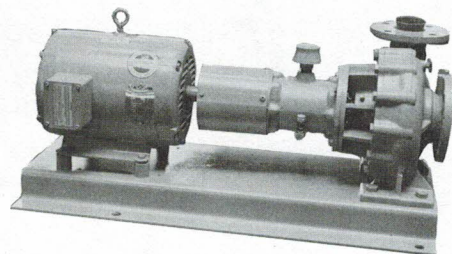
Model FB11

The MEPCO Type FB11 pump is of double volute type for horizontal mounting. Particularly suited for applications where net positive suction head available may be limited. Ten models are available with ranges from 7-1/2 HP to 75 HP and capacities to 2600 GPM, 55 PSI. Refer to Form No. 1433.



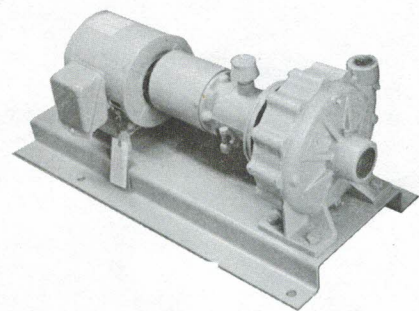
Model T

The MEPCO Type T pump is of the double suction horizontal split type. Fifty models are available in the T pump with ranges from 1 HP to 200 HP and capacities to 6000 GPM, 180 PSI. Refer to Form No. 1607.



Model B9

The MEPCO Type B9 pump is of the volute type for horizontal mounting. Twenty-eight models are available in the B9 unit with ranges from 1 HP to 25 HP and capacities to 1,000 GPM, 40 PSI. Refer to Form No. 1445.



Model AB9

The MEPCO Type AB9 pump is of the volute type for horizontal mounting. Twenty-five models are available in the AB9 pump with ranges from 3/4 HP to 10 HP and capacities to 450 GPM, 40 PSI. Refer to Form No. 1452.

Turbine Pumps

The Turbine pumps are high pressure / low capacity pumps for non-lubricating fluid handling services. Used for boiler feed, condensate return and other hot water or glycol applications, these pumps are especially designed to handle entrained air or other trapped gases in quantities that will bind normal centrifugal pumps. These pumps are an optimum selection for process, chemical and other services requiring a steep constantly rising performance curve.

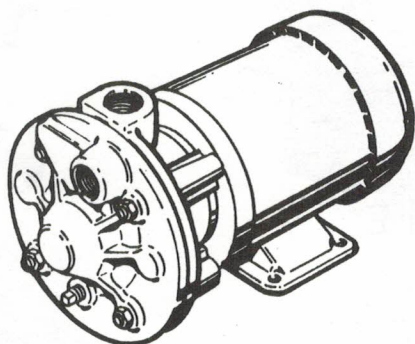
LOW NPSH REQUIREMENTS — Pumps have excellent NPSH requirements, which makes them ideally suited for difficult applications.

MINIMUM SHAFT DEFLECTION — Provided by heavy duty bearings and large diameter shafts.

BALANCED AXIAL LOADS — Impeller design balances thrust to promote long service life.

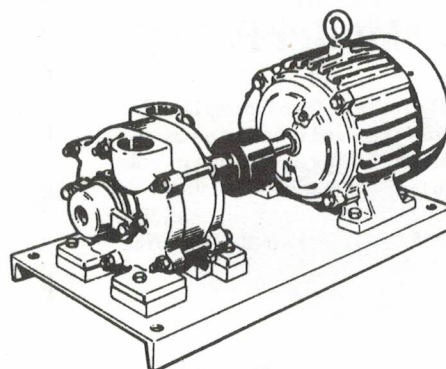
STANDARD CONSTRUCTION — Is bronze fitted with bronze shaft sleeve and corrosion resistant mechanical seals.

Close-Coupled



The Close-Coupled Turbine pumps by MEPCO are offered in both 1750 and 3500 RPM. They come in horsepower's ranging from 1/3 HP to 7-1/2 HP. Refer to Form Nos. 1485-1 and 1485-2.

Base Mounted



The Base Mounted Turbine Pumps by MEPCO are offered in 1750 RPM only. They have a horsepower range from 1/3 HP to 7-1/2 HP. Refer to Form Nos. 1485-1 and 1485-2.

Contact **MEPCO** for more details and application assistance . . . today



MARSHALL ENGINEERED PRODUCTS CO.

811 East Main Street • Marshalltown, Iowa 50158 • 515-752-4291 • FAX 515-753-0496

Formerly Dunham Division of Dunham-Bush, Inc.